

Brain Waves

Welcome!

Welcome back to another school year of supporting students with TBI! Thank you for taking a few moments at the beginning of the summer to share how we might support your work this year. Let's start with some celebrations!



Things your PSU does well related to TBI:

- Assessment
- Consultation
- Collaboration

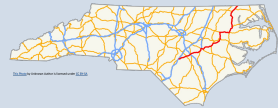
Your challenges included:

- Limited availability of tools
- Involvement with Return to Learn implementation
- Understanding complex medical conditions
- Prevention & Intervention

Quarterly Practice Brief for NCDPI TBI Approved Providers September 2021

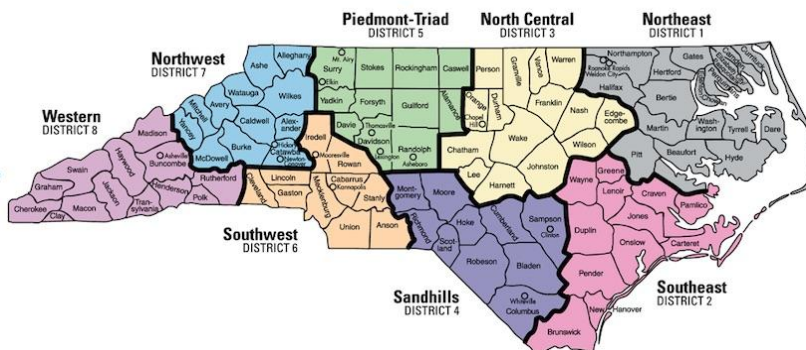
So, what's next? Well, the Advisory Council is here to support you. Here are some things to look forward to throughout the year:

- **Regional distribution sites** for materials (*more info on page 2*)
- **Updated RtL trainings** - for all staff and return to learn teams specifically



- **TBI Institute** - professional learning designed just for you - as has become our tradition, it will be in the spring, so watch for a "Save the Date" coming soon!

- **Communities of Practice** - Did you know that you not only have access to your fellow TBI Approved Providers, but also to the neuropsychologists who serve as Approved Supervisors? (*more info on page 2*)



Communities of Practice (CoP)

Use the links below to access your CoP. You can submit a question/topic on the forum or create an "event" to get live support from your colleagues via Google Hangout.

[North Central/Northeast](#)

[Northwest/Western](#)

[Piedmont-Triad/Southwest](#)

[Sandhill/Southeast](#)

Need materials? Coming to a regional site near you!

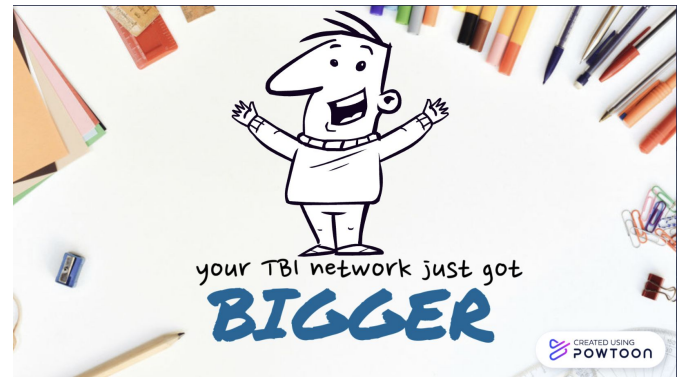
- What sort of materials can I borrow?
 - Assessment kits
 - Professional resources
- Where will the regional material sites be?
 - Southwest - Kannapolis City
 - Piedmont Triad - Winston Salem
 - North Central & North East - Carrboro
 - Southeast & Mountain regions - TBD ([Let us know if you are interested in being a regional site manager](#))
- How will the requests for materials work? The request process is coming soon! Via the request process, you may:
 - Select the regional site closest to you
 - Select the material(s) needed
 - Enter your contact information
 - Once submitted, the regional site manager will receive an email with the request, and coordinate a pick-up time with you
- How long can I keep the materials?
 - 30 days - with the option to renew

TBI Communities of Practice

The purpose of the TBI *Communities of Practice* is to develop regional capacity to support effective practices related to assessment, consultation and intervention planning and implementation for students with TBI enrolled in NC public schools.

You can submit a question/topic on the forum, or create an "event" to get live support from your colleagues.

The communities are linked on page 1
Click on the image below to learn more!



Professional Development Opportunities

Pearson Assessment Webinars

- [WRAML 3 Overview](#)
- [Assessing Memory in a School Setting - September 22 @ 11am](#)

PAR - sign-in to the partrainingportal.com

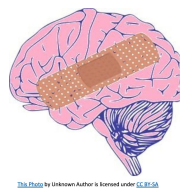
- Overview of the Child and Adolescent Memory Profile (ChAMP)
- ConcussTrack: Advanced Interpretation and Clinical Application of the PostConcussion Symptom Inventory™-2 (PCSI-2) and the PostConcussion Executive Inventory™

The Question of Birth Trauma

We'll be adding to this to the [FAQ](#) soon!

Question: *What counts as birth trauma?*

Answer: Birth trauma is an event that occurs within the perinatal period (7 days before to 7 days after birth).



[Click here to help us improve the Return to Learn materials available](#)